

**Exhibit F**

**STANDBY POWER RATING**

50 kW, 63 kVA, 60 Hz

**PRIME POWER RATING\***

45.5 kW, 56 kVA, 60 Hz

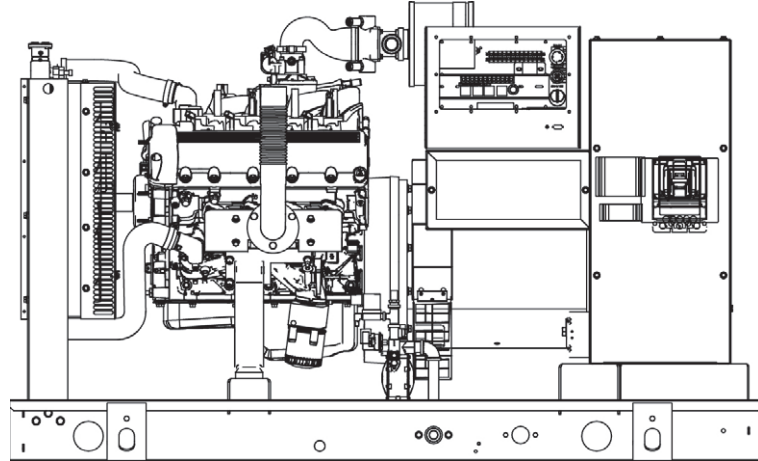


Image used for illustration purposes only




\*Built in the USA using domestic and foreign parts

\*EPA Certified Prime ratings are not available in the U.S. or its Territories.


**CODES AND STANDARDS**

Generac products are designed to the following standards:

 UL2200, UL508, UL142, UL498


 NFPA70, 99, 110, 37

 NEC700, 701, 702, 708

 ISO9001, 8528, 3046, 7637, Pluses #2b, 4

 NEMA ICS10, MG1, 250, ICS6, AB1

 ANSI C62.41  
American National Standards Institute

 IBC 2009, CBC 2010, IBC 2012, ASCE 7-05, ASCE 7-10, ICC-ES AC-156 (2012)

**POWERING AHEAD**

For over 50 years, Generac has led the industry with innovative design and superior manufacturing.

Generac ensures superior quality by designing and manufacturing most of its generator components, including alternators, enclosures and base tanks, control systems and communications software.

Generac's gensets utilize a wide variety of options, configurations and arrangements, allowing us to meet the standby power needs of practically every application.

Generac searched globally to ensure the most reliable engines power our generators. We choose only engines that have already been proven in heavy-duty industrial application under adverse conditions.

Generac is committed to ensuring our customers' service support continues after their generator purchase.

# SG050 | 5.4L | 50 kW

## INDUSTRIAL SPARK-IGNITED GENERATOR SET

EPA Certified Stationary Emergency

### STANDARD FEATURES

#### ENGINE SYSTEM

##### General

- Oil Drain Extension
- Air Cleaner
- Fan Guard
- Stainless Steel flexible exhaust connection
- Factory Filled Oil & Coolant
- Radiator Duct Adapter (open set only)
- Critical Exhaust Silencer (enclosed only)

##### Fuel System

- Flexible fuel line NPT Connection
- Primary and secondary fuel shutoff

##### Cooling System

- Closed Coolant Recovery System
- UV/Ozone resistant hoses
- Factory-Installed Radiator
- 50/50 Ethylene glycol antifreeze
- Radiator drain extension

##### Engine Electrical System

- Battery charging alternator
- Battery cables
- Battery tray
- Rubber-booted engine electrical connections
- Solenoid activated starter motor

#### ALTERNATOR SYSTEM

- UL2200 Genprotect™
- Class H insulation material
- 2/3 Pitch
- Skewed Stator
- Brushless Excitation
- Sealed Bearings
- Amortisseur winding
- Full load capacity alternator

#### GENERATOR SET

- Internal Genset Vibration Isolation
- Separation of circuits - high/low voltage
- Separation of circuits - multiple breakers
- Wrapped Exhaust Piping
- Standard Factory Testing
- 2 Year Limited Warranty (Standby rated Units)
- 1 Year Warranty (Prime rated units)
- Silencer mounted in the discharge hood (enclosed only)

#### ENCLOSURE (IF SELECTED)

- Rust-proof fasteners with nylon washers to protect finish
- High performance sound-absorbing material (L1 & L2)
- Gasketed doors
- Stamped air-intake louvers
- Air discharge hoods for radiator-upward pointing
- Stainless steel lift off door hinges
- Stainless steel lockable handles
- Rhino Coat™ - Textured polyester powder coat

#### CONTROL SYSTEM



##### Control Panel

- Digital H Control Panel - Dual 4x20 Display
- Programmable Crank Limiter
- 7-Day Programmable Exerciser
- Special Applications Programmable PLC
- RS-232/485
- All-Phase Sensing DVR
- Full System Status
- Utility Monitoring
- Low Fuel Pressure Indication
- 2-Wire Start Compatible
- Power Output (kW)
- Power Factor
- kW Hours, Total & Last Run

- Real/Reactive/Apparent Power
- All Phase AC Voltage
- All Phase Currents
- Oil Pressure
- Coolant Temperature
- Coolant Level
- Engine Speed
- Battery Voltage
- Frequency
- Date/Time Fault History (Event Log)
- Isochronous Governor Control
- Waterproof/sealed Connectors
- Audible Alarms and Shutdowns
- Not in Auto (Flashing Light)
- Auto/Off/Manual Switch
- E-Stop (Red Mushroom-Type)
- NFPA110 Level I and II (Programmable)
- Customizable Alarms, Warnings, and Events
- Modbus protocol
- Predictive Maintenance algorithm
- Sealed Boards
- Password parameter adjustment protection

- Single point ground
- 15 channel data logging
- 0.2 msec high speed data logging
- Alarm information automatically comes up on the display

##### Alarms

- Oil Pressure (Pre-programmable Low Pressure Shutdown)
- Coolant Temperature (Pre-programmed High Temp Shutdown)
- Coolant Level (Pre-programmed Low Level Shutdown)
- Low Fuel Pressure Alarm
- Engine Speed (Pre-programmed Over speed Shutdown)
- Battery Voltage Warning
- Alarms & warnings time and date stamped
- Alarms & warnings for transient and steady state conditions
- Snap shots of key operation parameters during alarms & warnings
- Alarms and warnings spelled out (no alarm codes)

## CONFIGURABLE OPTIONS

---

### ENGINE SYSTEM

#### General

- Engine Block Heater
- Oil Heater
- Air Filter Restriction Indicator
- Stone Guard (Open Set Only)
- Critical Exhaust Silencer (Open Set Only / Standard on Ultra Low Emissions Option)

#### Fuel Electrical System

- 10A & 2.5A UL battery charger
- Battery Warmer

### ALTERNATOR SYSTEM

- Alternator Upsizing
- Anti-Condensation Heater
- Tropical Coating
- Permanent Magnet Excitation

### CIRCUIT BREAKER OPTIONS

- Main Line Circuit Breaker
- 2nd Main Line Circuit Breaker
- Shunt Trip and Auxiliary Contact
- Electronic Trip Breaker

## ENGINEERED OPTIONS

---

### ENGINE SYSTEM

- Fluid containment Pans
- Coolant heater ball valves

### ALTERNATOR SYSTEM

- 3rd Breaker Systems

### CONTROL SYSTEM

- Spare inputs (x4) / outputs (x4) - H Panel Only
- Battery Disconnect Switch

### GENERATOR SET

- Gen-Link Communications Software (English Only)
- Extended Factory Testing (3 Phase Only)
- IBC Seismic Certification
- 8 Position Load Center
- 2 Year Extended Warranty
- 5 Year Warranty
- 5 Year Extended Warranty

### ENCLOSURE

- Standard Enclosure
- Level 1 Sound Attenuation
- Level 2 Sound Attenuation
- Steel Enclosure
- Aluminum Enclosure
- 150 MPH Wind Kit
- 12 VDC Enclosure Lighting Kit
- 120 VAC Enclosure Lighting Kit
- AC/DC Enclosure Lighting Kit
- Door Alarm Switch

### GENERATOR SET

- Special Testing
- Battery Box

### ENCLOSURE

- Motorized Dampers
- Enclosure Ambient Heaters

### CONTROL SYSTEM

- 21-Light Remote Annunciator
- Remote Relay Board (8 or 16)
- Oil Temperature Sender with Indication Alarm
- Remote E-Stop (Break Glass-Type, Surface Mount)
- Remote E-Stop (Red Mushroom-Type, Surface Mount)
- Remote E-Stop (Red Mushroom-Type, Flush Mount)
- Remote Communication - Bridge
- Remote Communication - Ethernet
- 10A Run Relay
- Ground Fault Indication and Protection Functions

## RATING DEFINITIONS

**Standby** - Applicable for a varying emergency load for the duration of a utility power outage with no overload capability.

**Prime** - Applicable for supplying power to a varying load in lieu of utility for an unlimited amount of running time. A 10% overload capacity is available for 1 out of every 12 hours. The Prime Power option is only available on International applications. Power ratings in accordance with ISO 8528-1, Second Edition

**APPLICATION AND ENGINEERING DATA**

**ENGINE SPECIFICATIONS**

General

Make	Generac
Cylinder #	8
Type	V
Displacement - L (cu In)	5.4L (329.53)
Bore - mm (in)	90.17 (3.55)
Stroke - mm (in)	105.92 (4.17)
Compression Ratio	9:1
Intake Air Method	Naturally Aspirated
Number of Main Bearings	4
Connecting Rods	Forged
Cylinder Head	Aluminum
Cylinder Liners	No
Ignition	Single Fire
Piston Type	Aluminum Alloy
Crankshaft Type	Nodular Iron
Lifter Type	Hydraulic
Intake Valve Material	Steel Alloy
Exhaust Valve Material	Hardened Steel
Hardened Valve Seats	Yes
<b>Engine Governing</b>	
Governor	Electronic
Frequency Regulation (Steady State)	±0.25%
<b>Lubrication System</b>	
Oil Pump Type	Gear
Oil Filter Type	Full-flow sping-on cartridge
Crankcase Capacity - L (qts)	5.7 (6)

Cooling System

Cooling System Type	Pressurized Closed Recovery
Water Pump Flow -gal/min (l/min)	38 (144)
Fan Type	Pusher
Fan Speed (rpm)	2143
Fan Diameter mm (in)	508 (20)
Coolant Heater Wattage	1500
Coolant Heater Standard Voltage	120 V

Fuel System

Fuel Type	Natural Gas, Propane Vapor
Carburetor	Down Draft
Secondary Fuel Regulator	Standard
Fuel Shut Off Solenoid	Standard
Operating Fuel Pressure	7" - 11" H <sub>2</sub> O

Engine Electrical System

System Voltage	12 VDC
Battery Charging Alternator	Standard
Battery Size	See Battery Index 0161970SBY
Battery Voltage	12 VDC
Ground Polarity	Negative



**ALTERNATOR SPECIFICATIONS**

Standard Model	390mm
Poles	4
Field Type	Revolving
Insulation Class - Rotor	H
Insulation Class - Stator	H
Total Harmonic Distortion	<5%
Telephone Interference Factor (TIF)	<50

Standard Excitation	Brushless
Bearings	Sealed Ball
Coupling	Flexible Disc
Prototype Short Circuit Test	Yes
Voltage Regulator Type	Full Digital
Number of Sensed Phases	All
Regulation Accuracy (Steady State)	±0.25%

**OPERATING DATA**

**POWER RATINGS**

		Natural Gas	Propane Vapor
Single-Phase 120/240 VAC @1.0pf	50 kW	Amps: 208	Amps: 208
Three-Phase 120/208 VAC @0.8pf	50 kW	Amps: 173	Amps: 173
Three-Phase 120/240 VAC @0.8pf	50 kW	Amps: 150	Amps: 150
Three-Phase 277/480 VAC @0.8pf	50 kW	Amps: 75	Amps: 75
Three-Phase 347/600 VAC @0.8pf	50 kW	Amps: 60	Amps: 60

**STARTING CAPABILITIES (sKVA)**

sKVA vs. Voltage Dip

	kW	480 VAC						208/240 VAC					
		10%	15%	20%	25%	30%	35%	10%	15%	20%	25%	30%	35%
Standard	50	34	52	69	86	103	120	26	39	52	65	77	90
Upsize 1	60	42	63	83	104	125	146	32	47	62	78	94	110

Full load = 900,000 BTU/hr. @ 11" water column

**FUEL CONSUMPTION RATES\***

Natural Gas - ft <sup>3</sup> /hr (m <sup>3</sup> /hr)			Propane Vapor - ft <sup>3</sup> /hr (m <sup>3</sup> /hr)		
Percent Load	Standby		Percent Load	Standby	
25%	308 (8.7)		25%	102.6 (2.9)	
50%	527 (14.9)		50%	175.9 (5.0)	
75%	712 (20.2)		75%	237.5 (6.7)	
100%	879 (24.9)		100%	293.5 (8.3)	

\* Fuel supply installation must accommodate fuel consumption rates at 100% load.

**COOLING**

		Standby
Air Flow (inlet air combustion and radiator)	ft <sup>3</sup> /min (m <sup>3</sup> /in)	2470 (70.0)
Coolant Flow per Minute	gal/min (l/min)	38 (144)
Coolant System Capacity	gal (L)	3 (11.36)
Heat Rejection to Coolant	BTU/hr	200,000
Max. Operating Air Temp on Radiator	°F (°C)	122 (50)
Max. Operating Ambient Temperature (before derate)	°F (°C)	104 (40)
Maximum Radiator Backpressure	in H <sub>2</sub> O	0.5

**COMBUSTION AIR REQUIREMENT**

	Standby
Flow at Rated Power cfm (m <sup>3</sup> /min)	115 (3.3)

**ENGINE**

		Standby
Rated Engine Speed	rpm	1800
Horsepower at Rated kW**	hp	80
Piston Speed	ft/min	1251
BMEP	psi	107

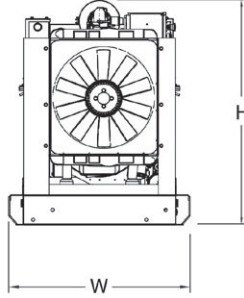
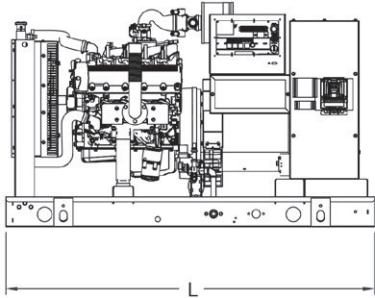
**EXHAUST**

		Standby
Exhaust Flow (Rated Output)	cfm (m <sup>3</sup> /min)	357 (10.1)
Max. Backpressure (Post Turbo)	in Hg (Kpa)	1.5 (5.1)
Exhaust Temp (Rated Output - post silencer)	°F (°C)	1100 (593)
Exhaust Outlet Size (Open Set)	mm (in)	63.5 (2.5)

\*\* Refer to "Emissions Data Sheet" for maximum BHP for EPA and SCAQMD permitting purposes.

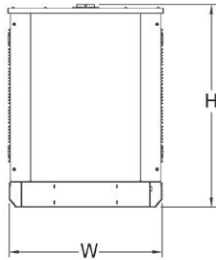
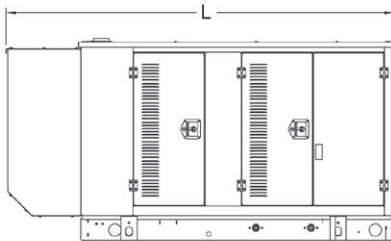
Deration – Operational characteristics consider maximum ambient conditions. Derate factors may apply under atypical site conditions. Please consult a Generac Power Systems Industrial Dealer for additional details. All performance ratings in accordance with ISO3046, BS5514, ISO8528 and DIN6271 standards.

**DIMENSIONS AND WEIGHTS**



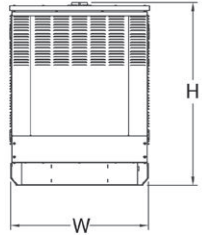
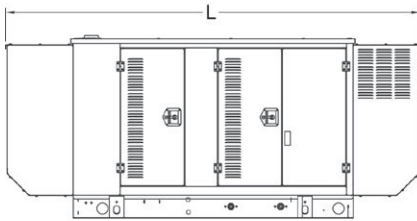
**OPEN SET (Includes Exhaust Flex)**

L x W x H in (mm)	76 (1930) x 37.4 (949.9) x 47 (1193.8)
Weight lbs (kg)	2256 (1023)



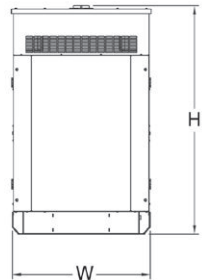
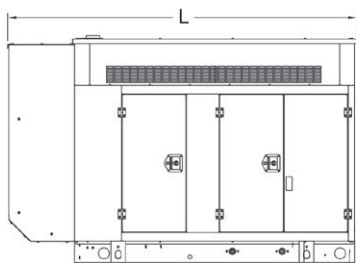
**STANDARD ENCLOSURE**

L x W x H in (mm)	94.8 (2408.9) x 38 (965.1) x 49.5 (1258.1)
Weight lbs (kg)	Steel: 2697 (1223) Aluminum: 2474 (1122)



**LEVEL 1 ACOUSTIC ENCLOSURE**

L x W x H in (mm)	112.5 (2857.1) x 38 (965.1) x 49.5 (1258.1)
Weight lbs (kg)	Steel: 2776 (1259) Aluminum: 2508 (1138)



**LEVEL 2 ACOUSTIC ENCLOSURE**

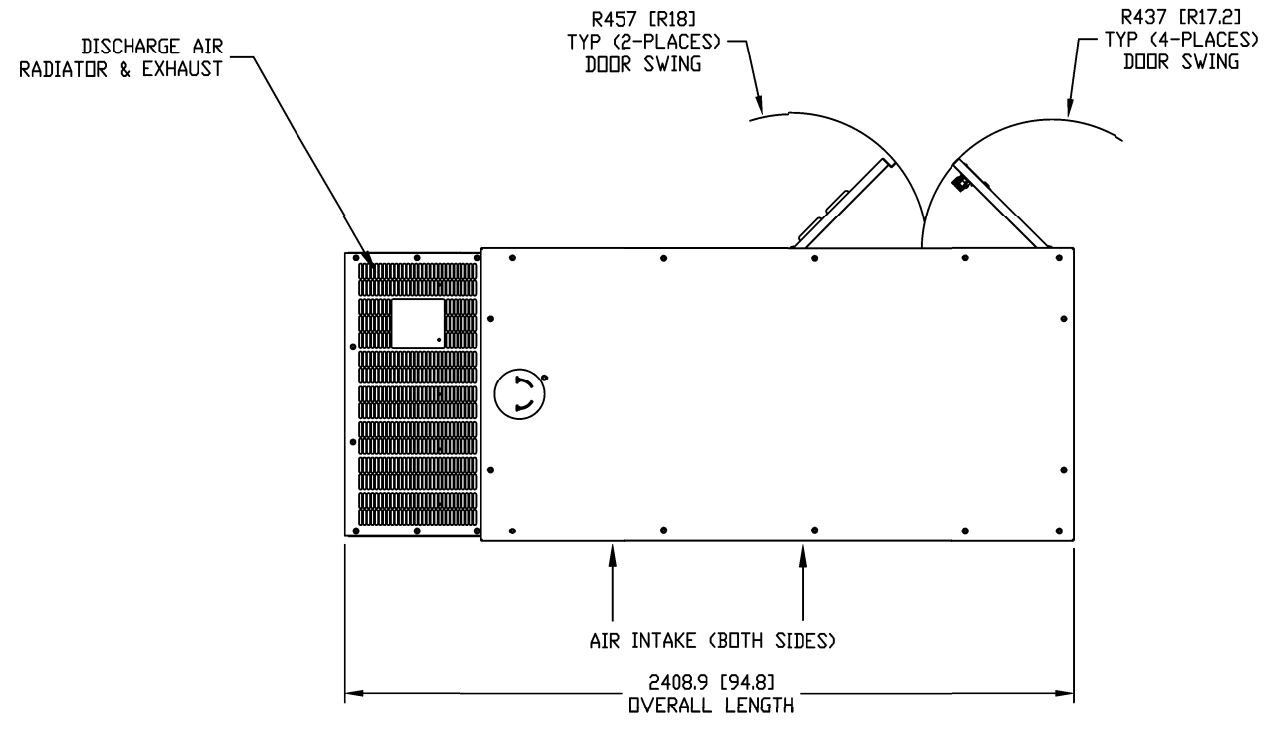
L x W x H in (mm)	94.8 (2407) x 38 (965.1) x 62 (1573.9)
Weight lbs (kg)	Steel: 2928 (1328) Aluminum: 2574 (1168)

**YOUR FACTORY RECOGNIZED GENERAC INDUSTRIAL DEALER**

Specification characteristics may change without notice. Please consult a Generac Power Systems Industrial Dealer for detailed installation drawings.

B

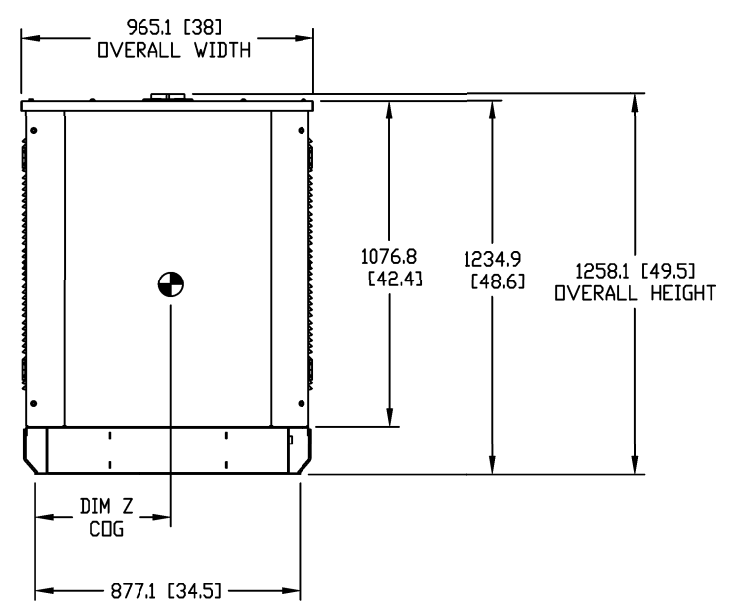
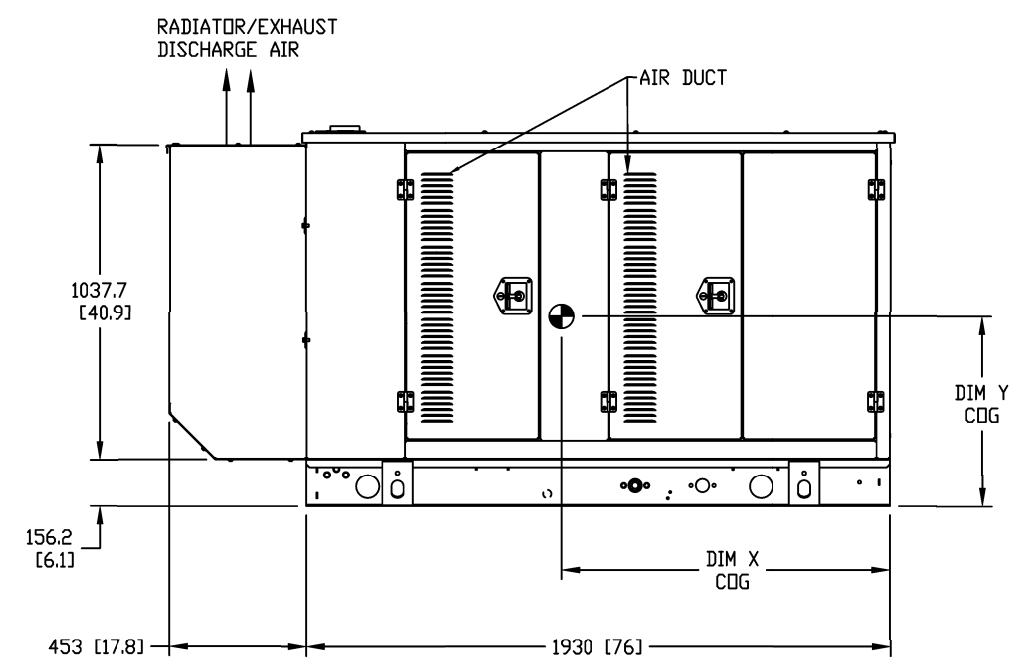
B



FOR ALL STUB-UP, WEIGHT, AND COG DETAILS, SEE CORRESPONDING OPEN SET DRAWING PER UNIT CONFIGURATION.

A

A



DRAWING CREATED FROM PRO/ENGINEER 3D FILE. ECO MODIFICATION TO BE APPLIED TO SOLID MODEL ONLY.

DIMENSIONS ARE IN MILLIMETERS (INCHES)

# INSTALLATION DRAWING

GENERAC POWER SYSTEMS OWNS THE COPYRIGHT OF THIS DRAWING WHICH IS SUPPLIED IN CONFIDENCE AND MUST NOT BE USED FOR ANY PURPOSE OTHER THAN FOR WHICH IT IS SUPPLIED WITHOUT THE EXPRESS WRITTEN CONSENT OF GENERAC POWER SYSTEMS. © GENERAC POWER SYSTEMS 2012

ELECTRONICALLY APPROVED  
INSIDE WINDCHILL

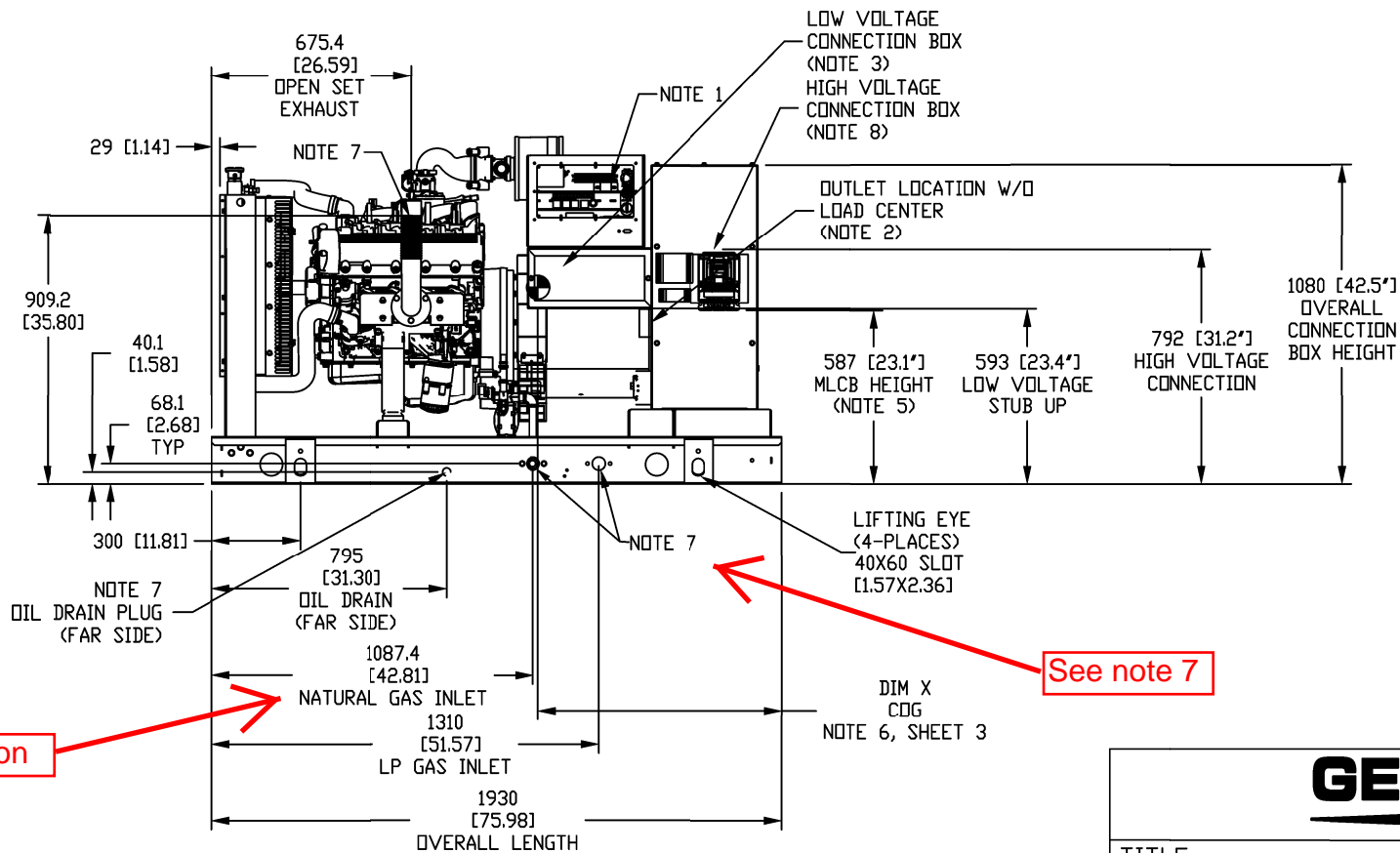
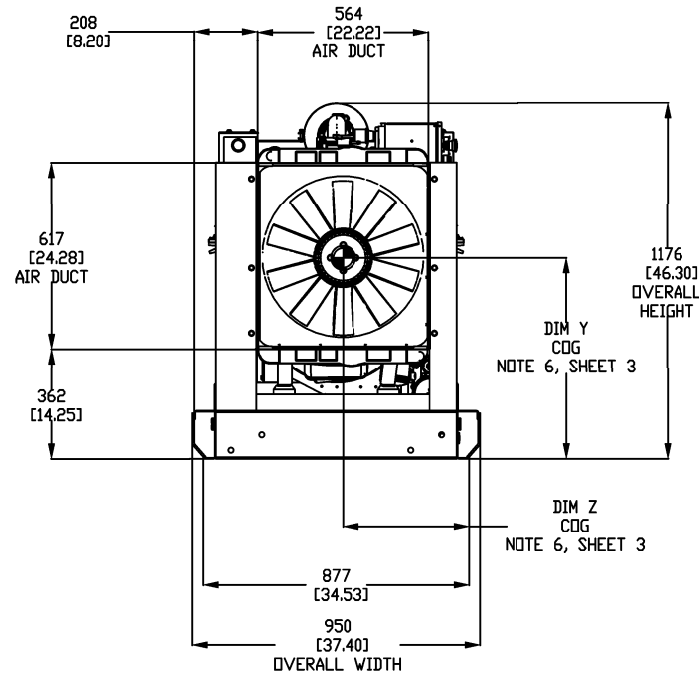
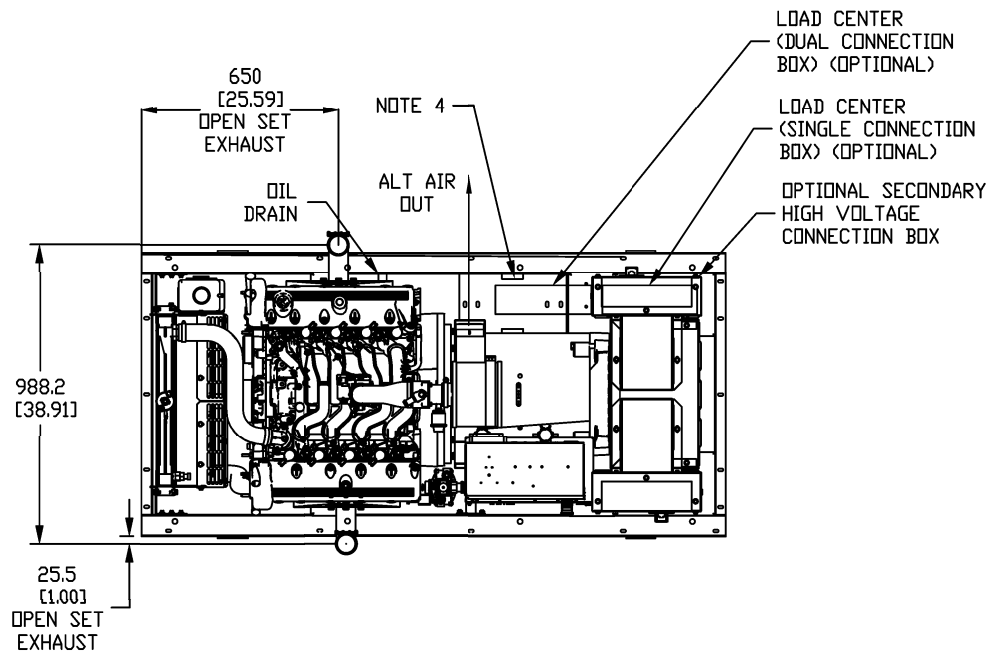


TITLE				
STD ENCLOSURE G5.4L 60HZ: SG035, PG032 SG040, PG036, SG045, PG041 SG050, PG045				
ISSUE DATE:		6/2/14		
SIZE	CAGE NO	DWG NO	REV	
B	N/A	OJ6865A	E	
SCALE	0.035	WT-KG	SHEET 1 of 1	



Notes:

- CONTROL PANEL, (OPTIONAL BATTERY CHARGER INSIDE).
  - 120V, 20A GFCI & 250V, 15A OUTLET (OPTIONAL).
  - CONNECTION POINTS FOR CONTROL WIRES PROVIDED IN THE LOW VOLTAGE CONNECTION BOX (USE LOW VOLTAGE STUB-UP AREA).
  - BATTERY (12 VOLT NEGATIVE GROUND SYSTEM).
  - MAIN LINE CIRCUIT BREAKER (MLCB), AC LOAD LEADS. (DIMENSIONS MAY VARY DUE TO UNIT CONFIGURATION)
  - CENTER OF GRAVITY AND WEIGHT MAY CHANGE DUE TO UNIT OPTIONS.
  - ENGINE SERVICE CONNECTIONS:  
 INLET NATURAL GAS = 1-1/4" NPT FEMALE COUPLING  
 INLET DIESEL = N/A  
 RETURN DIESEL = N/A  
 OIL DRAIN = 1/2" NPT COUPLING  
 RADIATOR DRAIN = N/A  
 FLEX PIPE OUTLET = 2.5" I.D.  
 EXHAUST OUTLET = N/A  
 \*\*\*\*\* SEE GENERATOR SIZING GUIDE FOR FUEL PIPE SIZING TO SUIT APPLICATION \*\*\*\*\*
  - AUXILIARY AC CONNECTION FOR UNIT OPTIONS ARE LOCATED IN HIGH VOLTAGE CONNECTION BOX, UNLESS AN OPTIONAL LOAD CENTER IS INSTALLED.
  - EXHAUST PIPES MAY BE ROTATED TO ALLOW MUFFLER TO POINT OUT TO THE RIGHT OR LEFT SIDE OF GENERATOR. (MAY NOT APPLY TO ALL UNITS)
  - GENERATOR SET MUST BE INSTALLED SUCH THAT FRESH COOLING AIR IS AVAILABLE AND DISCHARGE AIR FROM THE RADIATOR IS NOT RECIRCULATED.
  - BOTTOM OF GENERATOR SET MUST BE ENCLOSED TO PREVENT PEST INTRUSION AND RECIRCULATION OF DISCHARGE AIR AND/OR IMPROPER COOLING AIR FLOW.
  - EXHAUST SYSTEM MAXIMUM BACK PRESSURE = 20" H2O.
  - INSTALL EXHAUST BLANKETS ALONG THIS LINE.
  - CONNECT THE OPEN SET EXHAUST PER NFPA 37
  - BLANKETS SHOULD NOT COVER OXYGEN SENSOR.
  - OXYGEN SENSOR MUST BE MOUNTED BETWEEN ENGINE OUTLET AND SILENCER INLET AS SHOWN. IF ELBOW IS REQUIRED, ONLY SINGLE ELBOW MAY BE USED.
  - CATALYZED SILENCER (FOR EPA UNITS) MUST BE MOUNTED IN DESCRIBED POSITION. FAILING TO FOLLOW THESE INSTRUCTIONS WHEN INSTALLING A CERTIFIED ENGINE IN A PIECE OF STATIONARY EQUIPMENT VIOLATES FEDERAL LAW 40 CFR 1068.105(b), SUBJECT TO FINES OR PENALTIES AS DESCRIBED IN THE CLEAN AIR ACT.
  - BOLTS OR STUDS USED TO MOUNT UNIT TO PAD SHALL BE 5/8 - 11 GRADE 5.
- ADDITIONAL NOTES: FOR WEIGHT AND CENTER OF GRAVITY DATA SEE NOTE 6, AND SHEET 3.



Nat Gas connection

See note 7

Use this drawing for reference only

DRAWING CREATED FROM PRO/ENGINEER 3D FILE. ECO MODIFICATION TO BE APPLIED TO SOLID MODEL ONLY.

DIMENSIONS ARE IN MILLIMETERS (INCHES)

**GENERAC**

TITLE  
 OPEN SET  
 G5.4L 60HZ: SG035, PG032  
 SG040, PG036, SG045, PG041  
 SG050, PG045

ISSUE DATE: 6/2/14		REV F	
SIZE B	CAGE NO N/A	DWG NO 0J6865	REV F
SCALE 0.035	WT-KG	SHEET 1 of 3	

# INSTALLATION DRAWING

GENERAC POWER SYSTEMS OWNS THE COPYRIGHT OF THIS DRAWING WHICH IS SUPPLIED IN CONFIDENCE AND MUST NOT BE USED FOR ANY PURPOSE OTHER THAN FOR WHICH IT IS SUPPLIED WITHOUT THE EXPRESS WRITTEN CONSENT OF GENERAC POWER SYSTEMS. © GENERAC POWER SYSTEMS 2012

ELECTRONICALLY APPROVED  
INSIDE WINDCHILL



4

3

SH 2/3 REV E

1

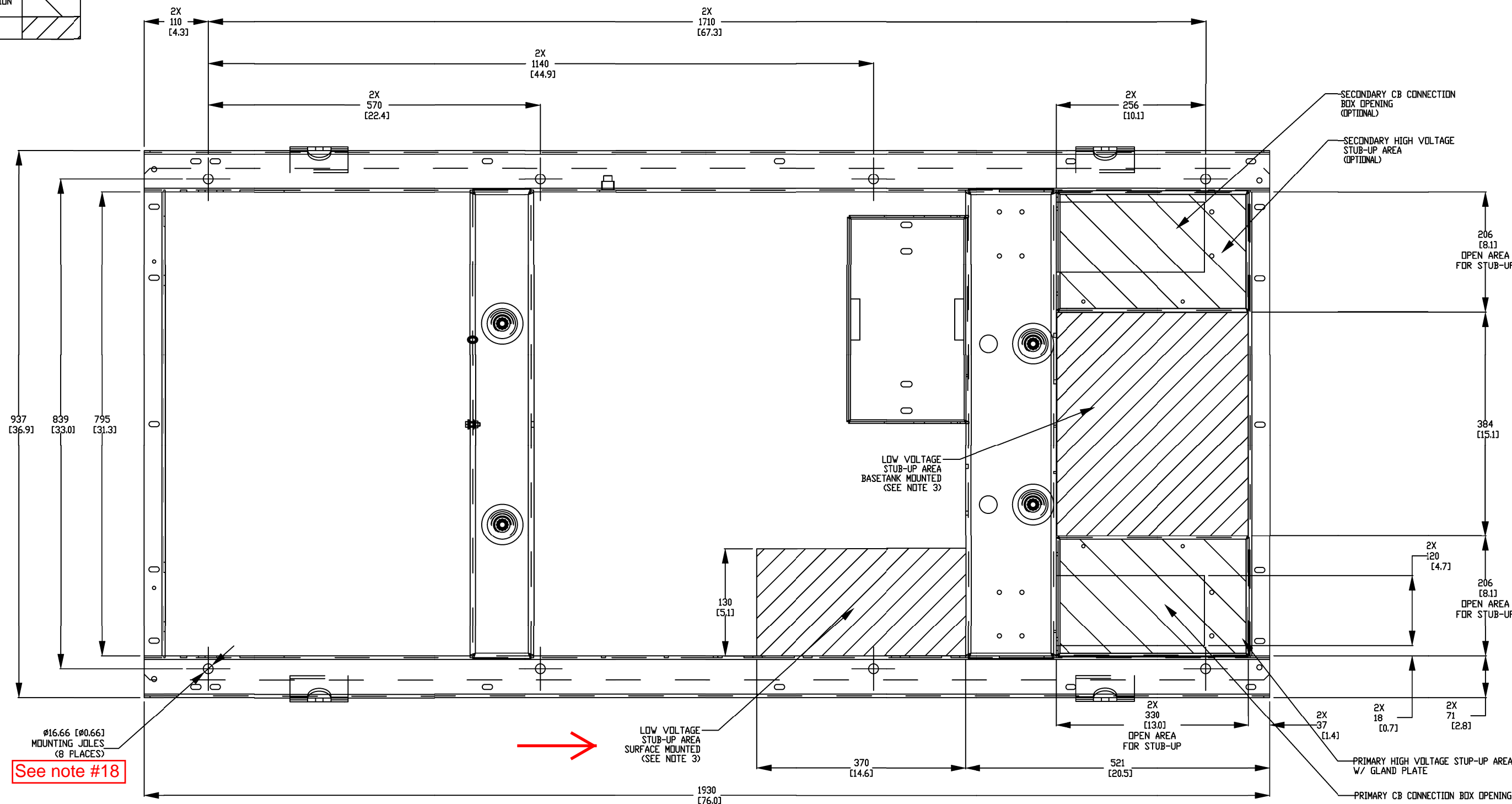
RECOMMENDED ELECTRICAL STUB-UP	
(HIGH VOLTAGE STUB-UP) AC LOAD LEAD CONDUIT FOR PERMANENT MAGNET EXCITATION CONNECTION BOX	
(LOW VOLTAGE STUB-UP)	

B

B

A

A



937 [36.9]  
839 [33.0]  
795 [31.3]

Ø16.66 [Ø0.66]  
MOUNTING JOLES  
(8 PLACES)

See note #18

LOW VOLTAGE  
STUB-UP AREA  
SURFACE MOUNTED  
(SEE NOTE 3)

LOW VOLTAGE  
STUB-UP AREA  
BASETANK MOUNTED  
(SEE NOTE 3)

2X  
330  
[13.0]  
OPEN AREA  
FOR STUB-UP

2X  
37  
[1.4]

PRIMARY HIGH VOLTAGE STUB-UP AREA  
W/ GLAND PLATE

PRIMARY CB CONNECTION BOX OPENING

206 [8.1]  
OPEN AREA  
FOR STUB-UP

206 [8.1]  
OPEN AREA  
FOR STUB-UP

2X  
120  
[4.7]

2X  
18  
[0.7]

2X  
71  
[2.8]

DRAWING CREATED FROM PRO/ENGINEER  
3D FILE. ECO MODIFICATION TO BE  
APPLIED TO SOLID MODEL ONLY.

DIMENSIONS ARE IN MILLIMETERS [INCHES]

# INSTALLATION DRAWING

GENERAC POWER SYSTEMS OWNS THE COPYRIGHT OF THIS DRAWING  
WHICH IS SUPPLIED IN CONFIDENCE AND MUST NOT BE USED FOR  
ANY PURPOSE OTHER THAN FOR WHICH IT IS SUPPLIED WITHOUT  
THE EXPRESS WRITTEN CONSENT OF GENERAC POWER SYSTEMS.  
© GENERAC POWER SYSTEMS 2012

ELECTRONICALLY APPROVED  
INSIDE WINDCHILL

## GENERAC

TITLE				
STUB-UP VIEW G5.4L 60HZ: SG035, PG032 SG040, PG036, SG045, PG041 SG050, PG045				
ISSUE DATE: 6/2/14				
SIZE	CAGE NO	DWG NO	REV	
B	N/A	0J6865	F	
SCALE	0.120	WT-KG	SHEET	2 of 3

4

3

2

1

OPEN SET

MODEL	VOLTAGE	WEIGHT	CENTER OF GRAVITY DIM X	CENTER OF GRAVITY DIM Y	CENTER OF GRAVITY DIM Z
SG035, PG032	220V, 240V, Ø1	993 kg [2,190 lbs]	1113 [43.8]	569 [22.4]	455 [17.9]
SG040, PG036	220V, 240V, Ø1				
SG045, PG041	220V, 240V, Ø1	1,018 kg [2,245 lbs]	1098 [43.2]	566 [22.3]	
SG050, PG045	220V, 240V, Ø1				
SG035, PG032/SG040, PG036/SG045, PG041/SG050, PG045	240V, Ø1 (60kw UPSIZE)	1,023 kg [2,256 lbs]	1096 [43.1]	566 [22.3]	
SG035, PG032	208V, 240V, 400V, 480V, 600V	997 kg [2,199 lbs]	1111 [43.7]	568 [22.4]	
SG040, PG036	208V, 240V, 400V, 480V, 600V	1,007 kg [2,221 lbs]	1104 [43.5]	567 [22.3]	
SG045, PG041	208V, 240V, 400V, 480V, 600V	1,023 kg [2,256 lbs]	1096 [43.1]	566 [22.3]	
SG050, PG045	208V, 240V, 400V, 480V, 600V				
SG035, PG032/SG040, PG036/SG045, PGC41/SG050, PG045	208V, 240V, 480V, 600V (60kw UPSIZE)	1,051 kg [2,318 lbs]	1120 [44.1]	552 [21.7]	

NOTE: CENTER OF GRAVITY AND WEIGHT MAY CHANGE DUE TO UNIT OPTIONS

STD ENCLOSURE, STEEL

MODEL	VOLTAGE	WEIGHT	CENTER OF GRAVITY DIM X	CENTER OF GRAVITY DIM Y	CENTER OF GRAVITY DIM Z
SG035, PG032	220V, 240V, Ø1	1,193 kg [2,631 lbs]	1147 [45.2]	596 [23.5]	428 [16.8]
SG040, PG036	220V, 240V, Ø1				
SG045, PG041	220V, 240V, Ø1	1,218 kg [2,686 lbs]	1135 [44.7]	593 [23.4]	
SG050, PG045	220V, 240V, Ø1				
SG035, PG032/SG040, PG036/SG045, PG041/SG050, PG045	240V, Ø1 (60kw UPSIZE)	1,223 kg [2,697 lbs]	1133 [44.6]	593 [23.3]	
SG035, PG032	208V, 240V, 400V, 480V, 600V	1,197 kg [2,639 lbs]	1146 [45.1]	595 [23.4]	
SG040, PG036	208V, 240V, 400V, 480V, 600V	1,207 kg [2,662 lbs]	1140 [44.9]	594 [23.4]	
SG045, PG041	208V, 240V, 400V, 480V, 600V	1,223 kg [2,697 lbs]	1133 [44.6]	593 [23.3]	
SG050, PG045	208V, 240V, 400V, 480V, 600V				
SG035, PG032/SG040, PG036/SG045, PG041/SG050, PG045	208V, 240V, 480V, 600V (60kw UPSIZE)	1,251 kg [2,759 lbs]	1151 [45.3]	581 [22.9]	

STD ENCLOSURE, ALUMINUM

WEIGHT	CENTER OF GRAVITY DIM X	CENTER OF GRAVITY DIM Y	CENTER OF GRAVITY DIM Z	
1,092 kg [2,408 lbs]	1141 [44.9]	581 [22.9]	427 [16.8]	
1,117 kg [2,463 lbs]	1127 [44.4]	578 [22.8]		
1,122 kg [2,474 lbs]	1125 [44.3]	578 [22.7]		
1,096 kg [2,417 lbs]	1140 [44.9]	580 [22.8]		
1,106 kg [2,439 lbs]	1133 [44.6]	579 [22.8]		
1,122 kg [2,474 lbs]	1125 [44.3]	578 [22.7]		
1,150 kg [2,536 lbs]	1146 [45.1]	565 [22.2]		431 [17.0]

L1A ENCLOSURE, STEEL

MODEL	VOLTAGE	WEIGHT	CENTER OF GRAVITY DIM X	CENTER OF GRAVITY DIM Y	CENTER OF GRAVITY DIM Z
SG035, PG032	220V, 240V, Ø1	1,229 kg [2,710 lbs]	1102 [43.4]	596 [23.5]	428 [16.9]
SG040, PG036	220V, 240V, Ø1				
SG045, PG041	220V, 240V, Ø1	1,254 kg [2,765 lbs]	1091 [42.9]	593 [23.4]	
SG050, PG045	220V, 240V, Ø1				
SG035, PG032/SG040, PG036/SG045, PGC41/SG050, PG045	240V, Ø1 (60kw UPSIZE)	1,259 kg [2,776 lbs]	1089 [42.9]	593 [23.4]	
SG035, PG032	208V, 240V, 400V, 480V, 600V	1,233 kg [2,719 lbs]	1100 [43.3]	596 [23.5]	
SG040, PG036	208V, 240V, 400V, 480V, 600V	1,243 kg [2,741 lbs]	1095 [43.1]	595 [23.4]	
SG045, PG041	208V, 240V, 400V, 480V, 600V	1,259 kg [2,776 lbs]	1089 [42.9]	593 [23.4]	
SG050, PG045	208V, 240V, 400V, 480V, 600V				
SG035, PG032/SG040, PG036/SG045, PGC41/SG050, PG045	208V, 240V, 480V, 600V (60kw UPSIZE)	1,287 kg [2,838 lbs]	1107 [43.6]	582 [22.9]	

L1A ENCLOSURE, ALUMINUM

WEIGHT	CENTER OF GRAVITY DIM X	CENTER OF GRAVITY DIM Y	CENTER OF GRAVITY DIM Z	
1,108 kg [2,442 lbs]	1119 [44.1]	581 [22.9]	427 [16.8]	
1,133 kg [2,497 lbs]	1106 [43.6]	579 [22.8]		
1,138 kg [2,508 lbs]	1104 [43.5]	578 [22.8]		
1,112 kg [2,451 lbs]	1118 [44.0]	581 [22.9]		
1,122 kg [2,473 lbs]	1112 [43.8]	580 [22.8]		
1,138 kg [2,508 lbs]	1104 [43.5]	578 [22.8]		
1,166 kg [2,570 lbs]	1125 [44.3]	566 [22.3]		431 [17.0]

L2A ENCLOSURE, STEEL

MODEL	VOLTAGE	WEIGHT	CENTER OF GRAVITY DIM X	CENTER OF GRAVITY DIM Y	CENTER OF GRAVITY DIM Z
SG035, PG032	220V, 240V, Ø1	1,298 kg [2,862 lbs]	1163 [45.8]	659 [26.0]	429 [16.9]
SG040, PG036	220V, 240V, Ø1				
SG045, PG041	220V, 240V, Ø1	1,323 kg [2,917 lbs]	1151 [45.3]	656 [25.8]	
SG050, PG045	220V, 240V, Ø1				
SG035, PG032/SG040, PG036/SG045, PGC41/SG050, PG045	240V, Ø1 (60kw UPSIZE)	1,328 kg [2,928 lbs]	1149 [45.2]	655 [25.8]	
SG035, PG032	208V, 240V, 400V, 480V, 600V	1,302 kg [2,871 lbs]	1161 [45.7]	659 [25.9]	
SG040, PG036	208V, 240V, 400V, 480V, 600V	1,312 kg [2,893 lbs]	1156 [45.5]	657 [25.9]	
SG045, PG041	208V, 240V, 400V, 480V, 600V	1,328 kg [2,928 lbs]	1149 [45.2]	655 [25.8]	
SG050, PG045	208V, 240V, 400V, 480V, 600V				
SG035, PG032/SG040, PG036/SG045, PGC41/SG050, PG045	208V, 240V, 480V, 600V (60kw UPSIZE)	1,356 kg [2,990 lbs]	1165 [45.9]	643 [25.3]	

L2A ENCLOSURE, ALUMINUM

WEIGHT	CENTER OF GRAVITY DIM X	CENTER OF GRAVITY DIM Y	CENTER OF GRAVITY DIM Z	
1,138 kg [2,508 lbs]	1150 [45.3]	613 [24.2]	427 [16.8]	
1,163 kg [2,563 lbs]	1136 [44.7]	610 [24.0]		
1,168 kg [2,574 lbs]	1134 [44.6]	610 [24.0]		
1,142 kg [2,517 lbs]	1148 [45.2]	613 [24.1]		
1,152 kg [2,539 lbs]	1142 [45.0]	612 [24.1]		
1,168 kg [2,574 lbs]	1134 [44.6]	610 [24.0]		
1,196 kg [2,636 lbs]	1153 [45.4]	566 [22.3]		431 [17.0]

DRAWING CREATED FROM PRO/ENGINEER 3D FILE. ECO MODIFICATION TO BE APPLIED TO SOLID MODEL ONLY.

# INSTALLATION DRAWING

GENERAC POWER SYSTEMS OWNS THE COPYRIGHT OF THIS DRAWING WHICH IS SUPPLIED IN CONFIDENCE AND MUST NOT BE USED FOR ANY PURPOSE OTHER THAN FOR WHICH IT IS SUPPLIED WITHOUT THE EXPRESS WRITTEN CONSENT OF GENERAC POWER SYSTEMS. © GENERAC POWER SYSTEMS 2012

ELECTRONICALLY APPROVED INSIDE WINDCHILL



TITLE  
WEIGHT & CENTER OF GRAVITY  
G5.4L 60HZ: SG035, PG032  
SG040, PG036, SG045, PG041  
SG050, PG045

ISSUE DATE:	6/2/14		
SIZE	CAGE NO	DWG NO	REV
B	N/A	0J6865	F
SCALE	0.035	WT-KG	SHEET 3 of 3